

SCHOOL PROFILE 2023

NEERJA MODI SCHOOL

KNOWLEDGE, TRUTH AND WISDOM - NURTURED BY VALUES

CBSE Aff. No. : 1730210

IB School Code : 3409

CIE Centre No. : In689

CEEB Code : 671654

UCAS Code : 40495



ABOUT US

Principal: Ms.Indu Dubey (indu@nmsindia.org)

IB Coordinator: Ms.Sarita Nathawat (sarita@nmsindia.org)

Guidance Counselor: Ms.Juanita Wazz (juanita@nmsindia.org), Ms.Arпита Gupta (arpita@nmsindia.org)

Team member: Ms.Namrata Pandey (namratapandey@nmsindia.org)

Team member: Ms.Apoorva Pushpita (apoorva@nmsindia.org)

School of Eminence Award with A* rating
India No.5, Rajasthan No.1 DAY-CUM-BOARDING SCHOOL (2023)

Ranked in Top 8 in India in last 7 years

by Education World (www.educationworld.in)

India's Best Schools 2023 - Careers 360
Most Preferred Workplace 2022- Marksmen in partnership
with India Today Television

Established in 2001, NMS is a co-educational day cum boarding school that offers a comprehensive educational journey from kindergarten to grade 12. Our student body encompasses diverse cultural, socioeconomic, or geographic backgrounds. Our reputation is built upon a dedication to academic excellence, offering students the choice of three prestigious boards: CBSE, IB, and IGCSE. We are deeply rooted in the principles of progressive education, guided by a core mission to make world-class learning accessible and affordable for all. Importantly, our dedication to affordability extends to our international curriculums, where the cost of attendance is notably lower than that of other IB schools nationwide. At NMS, our holistic educational philosophy integrates sports, visual and performing arts, community service, and leadership development into every student's educational journey. Many of our accomplished alumni have not only excelled in their careers within India but have also achieved remarkable success on the international stage, demonstrating the global impact of an education at NMS. Our impressive student body of approximately 5400 is supported by 400+ accomplished educators. Nestled within a sprawling 20-acre campus, we take pride in providing state-of-the-art facilities that enhance the overall learning experience.

COURSE OFFERINGS FOR THE ACADEMIC YEAR

IB SUBJECTS

Group 1: Studies in Language & Literature	Group 2: Language Acquisition	Group 3: Individuals and Societies	Group 4: Sciences	Group 5: Mathematics	Group 6: The Arts
English Language A: literature (HL/SL)	Hindi B (HL/SL), French B (HL/SL) French AB initio (SL)	Economics (SL/HL), Business & Management (SL/HL), History (SL/HL), Psychology (SL/HL), Global Politics (SL/HL)	Biology (SL/HL), Chemistry (SL/HL), Physics (SL/HL), Computer Science (SL/HL) ESS (SL)	Mathematics, Analysis and Approach (SL/HL) Mathematics, Application and Interpretation (SL/HL)	Visual Arts (SL/HL)

IGCSE SUBJECTS

Group 1: Languages	Group 2: Social Sciences	Group 3: Sciences	Group 4: Mathematics	Group 5: Creative, Technical & Vocational
English as First Language (0500), Hindi Second Language (0549), French as a Foreign Language (0520)	Economics (0455), Literature (0475), History (0470), Global Perspectives (0457)	Physics (0625), Chemistry (0620), Biology (0610)	International Mathematics (0607), Additional Math (0606)	ICT (0417), Business Studies (0450), Art & Design (0400), Computer Science (0478)

CBSE SUBJECTS (Grade 11 and 12)

COMPULSORY	English Core (301)				
ANY FOUR SUBJECTS (Minimum)	Biology (044), Chemistry (043) Physics (042), Mathematics (041),	Applied/ Commercial Arts (052), Economics (030), Entrepreneurship (066), Home Science (064),	Physical Education (048), Geography (029), Information Practice (065), Vocal Music (034),	Psychology (037), Business Studies (054), Accountancy (055), Applied Mathematics (241),	History (027), Political Science (028), Hindi Core (302)

CBSE SUBJECTS (Grade 9 and 10)

English Literature & Language (184)	Mathematics Standard (041) Mathematics Basic (241)	Science (086)	Social Science (087)	French (018), Hindi Course - A (002), Sanskrit Communicative (119)	Additional Subject Information Technology (402)
-------------------------------------	---	---------------	----------------------	---	--



ANNUAL GRADUATING CLASS RECOGNITION

School awards that recognize our student achievements in several categories include:

- **Shrimati Bimla Gupta Memorial Gold Medal:** for the Most Promising Female Student of the Year
- **Shri Anshoo Sudhir Gupta Memorial Gold Medal:** for the Most Promising Science Student of the Year
- **Distinguished Student Leader Award:** for Accomplished Leadership Role
- **Excellence in Science:** Demonstrating Excellence in Science
- **Tech for Good:** for the best use of technology to positively impact our community
- **Leadership in Innovation:** Strong leadership and Entrepreneurial Skills
- **Social Impact Award:** for Exemplary Service for a Social Cause
- **Edgemaker Award:** for Innovative and Entrepreneurial Skills
- **Pt. Birju Maharaj Dance Trophy:** for the Best Dancer of the Year
- **Excellence in STEM:** Demonstrating Excellence in Science and Technology



STUDENT OPPORTUNITIES

At NMS, we are committed to providing robust academic, co-curricular, and leadership opportunities, creating a campus that champions inclusivity and accessibility. Understanding the diverse backgrounds from which our students hail, we've taken proactive steps to establish a dedicated Resource Center assisting students in discovering meaningful opportunities. Simultaneously, the Innovation Lab and Collaborative Learning Hub empower self-directed learners, confident researchers, critical thinkers, expressive creators, and effective communicators. Our students lead 30 clubs, some of which have established productive partnerships, granting students exceptional access to accomplished mentors from various fields. We've also established an Alumni Outreach Committee, further strengthening our connections and providing an active platform for dialogue. Moreover, our students organize and host annual events, including MUN, TEDx, Jaipur Debate, Mathelogs, Budget Debate, NHack, Literature Festival, Sports Meet, Summer Camps, Art Exhibition, STEM Fair. Engaging in impactful community service projects like the NMS Changemakers, our students collaborate with local NGOs, creating positive ripples within the society they serve. Through these diverse endeavors, our students evolve into well-rounded individuals who excel academically and wholeheartedly embrace social responsibility, leaving a lasting, positive impact on both the local community and the wider world.

ACADEMIC CURRICULUM

We operate on a semester calendar with Semester 1 from April to September, and Semester 2 from October to March. International IGCSE and IB Diploma Program:

IGCSE 9-10: A minimum of 7 and maximum of 10 Subjects

IBDP 11-12: 3 Subjects at Higher Level & 3 at Standard Level, TOK course, 4000 word Extended Essay & minimum of 150 hrs of CAS

National CBSE:

CBSE 9-10: 6 Subjects - English, Hindi, Sanskrit or French, Mathematics, Science, Social Science, Information Technology

CBSE 11-12: 5 Subjects have to be studied for 2 continuous years, English being one of the compulsory subject.

*Graded for Work Education, Physical Health Education and General Studies.

RESULT 2022-23

CBSE RESULT 2023

TOTAL NO. OF STUDENTS	312
HIGHEST SCORE	98.2%
SCHOOL AVERAGE	83.03%

ENROLLMENT 2023 - 2024 CBSE CURRICULUM

Pre-Primary to grade 8 : 3588

High School (9 to 12) : 1654

Graduating Class : 411

INTERNATIONAL CURRICULUM

CP (1 to 8) : 640

IGCSE (9 & 10) : 116

IBDP (11 & 12) : 117

IB Graduating Class : 50

IBDP RESULT 2023

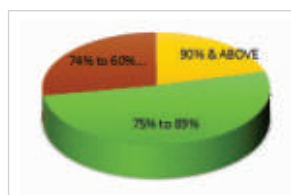
TOTAL NO. OF STUDENTS	32
HIGHEST IBDP SCORE	41
SCHOOL AVERAGE DIPLOMA SCORE	36

**100% RESULT
100% DIPLOMAS AWARDED**

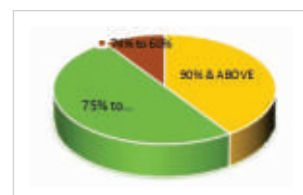
SAT Score Average for 2023

Subject	Average Score	Highest Score
EWR	630	770
Math	727	800
SAT	1356	1570

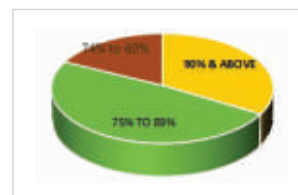
XII-Science-2023



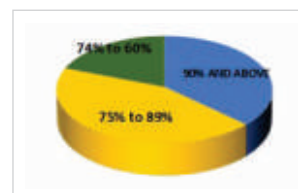
XII-Humanities-2023

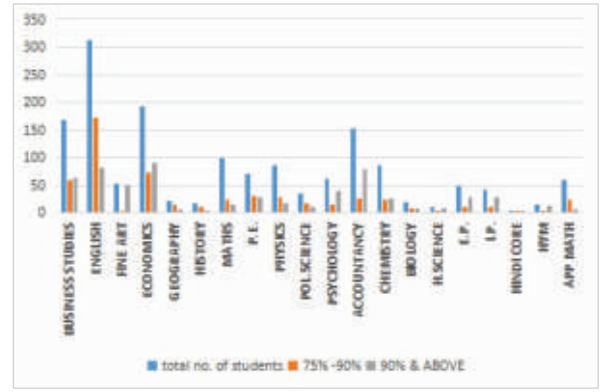
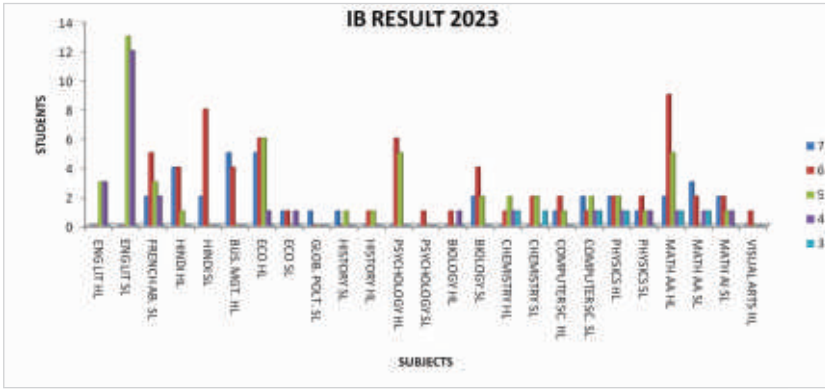


XII-Commerce-2023



X-2023





NATIONAL ACCEPTANCES

- All India Institute of Medical Science
- Amity University
- Ashoka University
- Ahmedabad University
- Bharti Vidyapeeth University
- Birla Institute of Technology- Pilani, Ranchi & Dubai
- Christ College, Bangalore
- Delhi University - SRCC, Miranda House
- Engineering Colleges- Mumbai University
- Fergusson College, Pune
- Flame University
- Government Law College Mumbai
- Institute of Sports Management
- Indian Institute of Information Technology
- Indian Institute of Science & Research
- Indian Institute of Art & Design
- Indian Institute of Technology- All Campus
- Institute of Hotel Management
- ISDI Parsons- Mumbai
- Jaipur Dental College
- Jain University
- Kamala Raheja College of Architecture
- Mahatma Gandhi Medical College
- Manipal University- Manipal, Jaipur
- MICA
- Mount Carmel Bangalore
- Mumbai University - All Colleges
- Narsee Monjee Institute of Management Studies
- National Institute of Design
- National Institute of Technology
- National Law University- Hyderabad, Bangalore
- Kolkatta, Mumbai & Jabalpur
- Nirma University
- National Institute of Fashion Technology
- Nirma University
- OP Jindal Global University
- Sawai Maansingh Medical College
- Shristi Institute of Art, Design and Tech., Bangalore
- SRM University, Chennai
- Shiv Nadar University
- St. Xavier's College- Mumbai, Kolkatta & Jaipur
- Symbiosis University Pune
- Unitedworld Institute Of Design (UID)
- UPES, Dehradun
- Vellore Institute of Technology- Chennai

INTERNATIONAL ACCEPTANCES

- United States**
 - Amherst College
 - American University
 - Arizona State University
 - Augustana College
 - Babson College
 - Barnard College
 - Baylor University
 - Bentley University
 - Beloit College
 - Binghamton University- SUNY
 - Boston University
 - Bowling Green State University
 - Brandeis University
 - Brown University
 - Bryant University
 - Bryn Mawr College
 - Bucknell University
 - Carnegie Mellon University
 - California College of Arts
 - California Institute of Technology
 - Claremont McKenna College
 - California Polytechnic State University
 - Carleton College
 - Case Western Reserve University
 - Centre college
 - Chapman University
 - Clarke University
 - Cleveland Institute of Art
 - Colby College
 - Colgate University
 - Cornell University
 - Connecticut College
 - Dartmouth College
 - Davidson College
 - DePaul University
 - Denison University
 - DePaul University
 - Draper University
 - Dickinson College
 - Drew University
 - Drexel University
 - Duke University
 - Earlham College
 - Elon University
 - Emerson College
 - Emory University
 - Fashion Institute of Technology
 - Florida Atlantic University
 - Florida Institute of Technology
 - Fordham University
 - Full Sail University
 - Franklin W.Olin Engineering College
 - Georgetown University
 - Georgia Institute of Technology
 - George Mason University
 - Georgia State University
 - George Washington University
 - Grinnell College
 - Goucher College
 - Harvey Mudd College
 - Harvard University
 - Haverford College
 - Hofstra University
 - Indiana University
 - IOWA State University
 - Ithaca College
 - Illinois Institute of Technology
 - Jefferson College
 - Johns Hopkins University
 - Johnson & Wales University
 - Juniata College
 - Kalamazoo College
 - Kenyon College
 - Knox College
 - Lafayette College
 - Lawrence University
 - Lehigh University
- Lewis & Clark College
- LIM College
- Loyola Marymount University
- Lynn University- Lewis & Clark
- Marist College
- Maryland Institute College of Art
- Massachusetts College of Art Design
- Massachusetts Institute of Technology
- Middlebury College
- Michigan State University
- Minerva Schools at KGI
- Mount Holyoke College
- New York University
- New York Institute of Technology
- Northeastern University
- Northwestern University
- Oberlin College of Arts & Science
- Old Dominion University
- Ohio Wesleyan University
- Ohio State University
- Occidental College
- Otis College of Art and Design
- Pace University
- Parsons School of Design
- Penn State University
- Philadelphia University
- Pomona College
- Pratt Institute
- Princeton University
- Purdue University
- Quinnipiac University
- Reed College
- Rensselaer Polytechnic Institute
- Rhode Island School of Design
- Rice University
- Rollins College
- Rose-Hulman Institute of Technology
- Rochester Institute of Technology
- Rutgers University
- Sacred Heart University
- Santa Barbara City college
- Santa Clara University
- San Jose State University
- Sarah Lawrence College
- Savannah College of Art and Design
- SCAD Atlanta
- School of the Art Institute of Chicago
- Seton Hall University
- Skidmore College
- Stanford University
- Stony Brook University
- Stevens Institute of Technology
- SUNY Binghamton University
- SUNY Plattsburg
- SUNY Newpaltz
- SUNY Stony Brook
- SUNY Buffalo
- Swarthmore College
- Syracuse University
- Temple University
- Texas Christian University
- Texas A&M university
- The University of West Alabama
- Trinity College Dublin
- Trinity University
- Tufts University
- Tulane University
- Union College
- University of Illinois Urbana-Champaign
- University of Texas at Arlington
- University of Arizona
- University of Cincinnati
- University of Dayton
- University of Delaware
- University of Georgia
- University of California- Berkeley
- University of California- Davis
- University of California- Irvine
- University of California- Los Angeles
- University of California- San deigo
- University of California- Santa Cruz
- University of California- Santa Barbara
- University of Colorado Boulder
- University of Connecticut
- University of Florida
- University of Houston
- University of Illinois Chicago
- University of Illinois at Urbana champagin
- University of Kansas
- University of Massachusetts Amherst
- University of Maryland Baltimore County
- University of Maryland College Park
- University of Memphis
- University of Miami
- University of Minnesota- Twin cities
- University of Michigan- Ann Arbour
- University of North Carolina-Chapel Hill
- University of Pennsylvania
- University of Pittsburgh
- University of Richmond
- University of Rochester
- University of San Deigo
- University of San Fransisco
- University of Southern California
- University of Tampa
- University of Texas - Austin
- University of Texas at Dallas
- University of Virginia
- Villanova University
- University of Washington- Seattle
- University of Wisconsin, Madison
- USC- Marshall School of Business
- Vanderbilt University
- Virginia Common Wealth University
- Virginia Tech University
- Wabash College
- Washington College
- Washington and Lee University
- Washington University- Saint Louis
- Wesleyan College
- Williams College
- Wheaton College
- Whittier College
- Whitworth University
- Yale University
- Europe**
 - Catholic University of the Sacred Heart
 - Cologne Business School
 - Design Academy Eindhoven
 - European Business school
 - Glon- Institute for Higher Education
 - IED - Istituto Europeo di Design Spa
 - IE Business School
 - International Business School Budapest
 - Trinity College Dublin
 - University of Amsterdam
 - University of Groningen
 - University of Twente
 - Vrije Universiteit Amsterdam
- Paris**
 - Instituto Marangoni, Paris
 - The New School, Parsons
- Hong Kong**
 - City University of Hong Kong
 - Hong Kong University
 - Hong Kong Baptist University
 - Hong Kong Polytechnique University
 - Hong Kong University of Science & Tech.
 - Savannah College of Art and Design
 - The Chinese University of Hong Kong
 - The University of Hong Kong

INTERNATIONAL ACCEPTANCES

- Australia**
 - Australian National University
 - Deakin University
 - Macquarie University
 - Monash University
 - RMIT University
 - Swinburne University
 - University of Melbourne
 - University of New South Wales
 - University of Technology
 - University of Queensland
 - University of Western Australia
 - University of Newcastle Australia
 - Griffith University
 - University of Wollongong
 - University of Sydney
 - University of Technology Sydney

INTERNATIONAL ACCEPTANCES

United Kingdom

Aston University
Arts University Bournemouth
Birkbeck, University of London
Brenel University London
Bangor University
Cambridge University
Cardiff University
Central Saint Martins
Coventry University
City University London
De Montfort University
Durham University
Glasgow School of Arts
Goldsmiths, University of London
Heriot-Watt University
Hult International Business School
Istituto Marangoni- London
Imperial College- London
King's College London
Kingston University London
Lancaster University
Leeds Arts University
Leeds Beckett University
London College of Fashion
London School of Economics & Political Science
Loughborough University
London Metropolitan University
Middlesex University London
Manchester Metropolitan University
New Castle University
Northumbria University
Nottingham Trent University
Oxford University
Queen Mary University of London
Queen's University Belfast
Royal Holloway, University of London
St. Andrews University
SOAS, University of London
University College London
University of Reading
University College Birmingham
University of the Arts London
University of Aberystwyth
University of Bath
University of Birmingham
University of Bolton
University of Bristol
University of Greenwich
University of East London
University of Cambridge
University of Cumbria
University of Derby
University of Dundee
University of Edinburgh
University of Essex
University of Exeter
University of Glasgow
University of Hertfordshire
University of Hull
University of Leeds
University of Leicester
University of Liverpool
University of Manchester
University of Northampton
University of Nottingham
University of Portsmouth
University of Sheffield
University of Southampton
University of St Andrews
University of Sussex
University of Warwick
University of West of England, Bristol
University of West London
University of Westminster
University of York

Japan

International Christian University
Osaka University
Ritsumeikan University
Ritsumeikan Asia Pacific University
Tokyo University
Waseda University

Singapore

Lasalle College of the Arts
National University of Singapore
Nanyang Academy of Fine Arts
Nanyang Technological University
Singapore Institute of Management
Singapore Management University
Yale-NUS College

France

Grenoble ecole de management
L'Ecole de Design - Nantes Atlantique
L'Institut Supérieur des Arts Appliqués - LISAA
Paris College of Arts
Parsons Paris - New School
Sciences PO

Canada

Brock University
Carleton University
Dalhousie University
Humber College
Lancaster University
McGill University
McMaster University
Ontario Tech University
Queen's University
Ryerson University
Simon Fraser University
Trent University
University of Alberta
University of British Columbia
University of Calgary
University of Guelph
University of Ottawa
University of Toronto
University of Victoria
University of Waterloo
University of Western Ontario
Wilfrid Laurier University
Western University
York University

UAE

New York University Abu Dhabi
Dubai Institute of Design and Innovation
Netherlands
Delft University of Technology
Erasmus University Rotterdam
Leiden University College The Hague
University of Amsterdam
Wageningen University
Germany
Karlsruhe Institute of Technology
University of Ingolstadt